



Arabian International Company for Transportation and Heavy Equipment

Table of Contents

- **Company Overview**
- **Manpower Head Count**
- **Organizational Chart**
- **Core Services and Fleet**
- **Top Clients**
- **Top Projects**
- **Awards and Certificates**

Company Overview

The growth of the construction industry across the markets has been phenomenal which prompted AIC to diversify their portfolio of investments, thus the formation of AIC for Transportation and Heavy Equipment. The target goal of the subsidiary is not only to serve AIC's internal construction and erection works but also to abreast the increasing demand within the region for a high quality independent heavy equipment provider and transport services. We function as supplier to many of the best known names in the construction industry and associates with some of the region's most ambitious construction projects. Our product line ranges from small support equipment to large erection equipment from the following categories: Heavy Equipment, Handling Equipment, Support Equipment and Transport. AIC for Transportation and Heavy Equipment continues to provide its customer a premier rental experience every step of the way and has become their equipment rental company of choice.

Manpower Head Count

DEPARTMENT HEAD:

General Manager	1
Sales Manager	1
Maintenance Manager	1
Operations Manager	<u>1</u>
Total	4

**Total Available Head Count
Is 105**

HSEQ:

Safety Officer	1
Inspection Officer	<u>1</u>
Total	2

MAINTENANCE:

Engineer	2
Foreman	3
Data Encoder	3
Electrician	5
Mechanics	8
Fabricator	1
Machinist	2
Tireman	1
Dentor	1
Painter	1
Helper	3
Cleaner	<u>1</u>
Total	31

OPERATIONS:

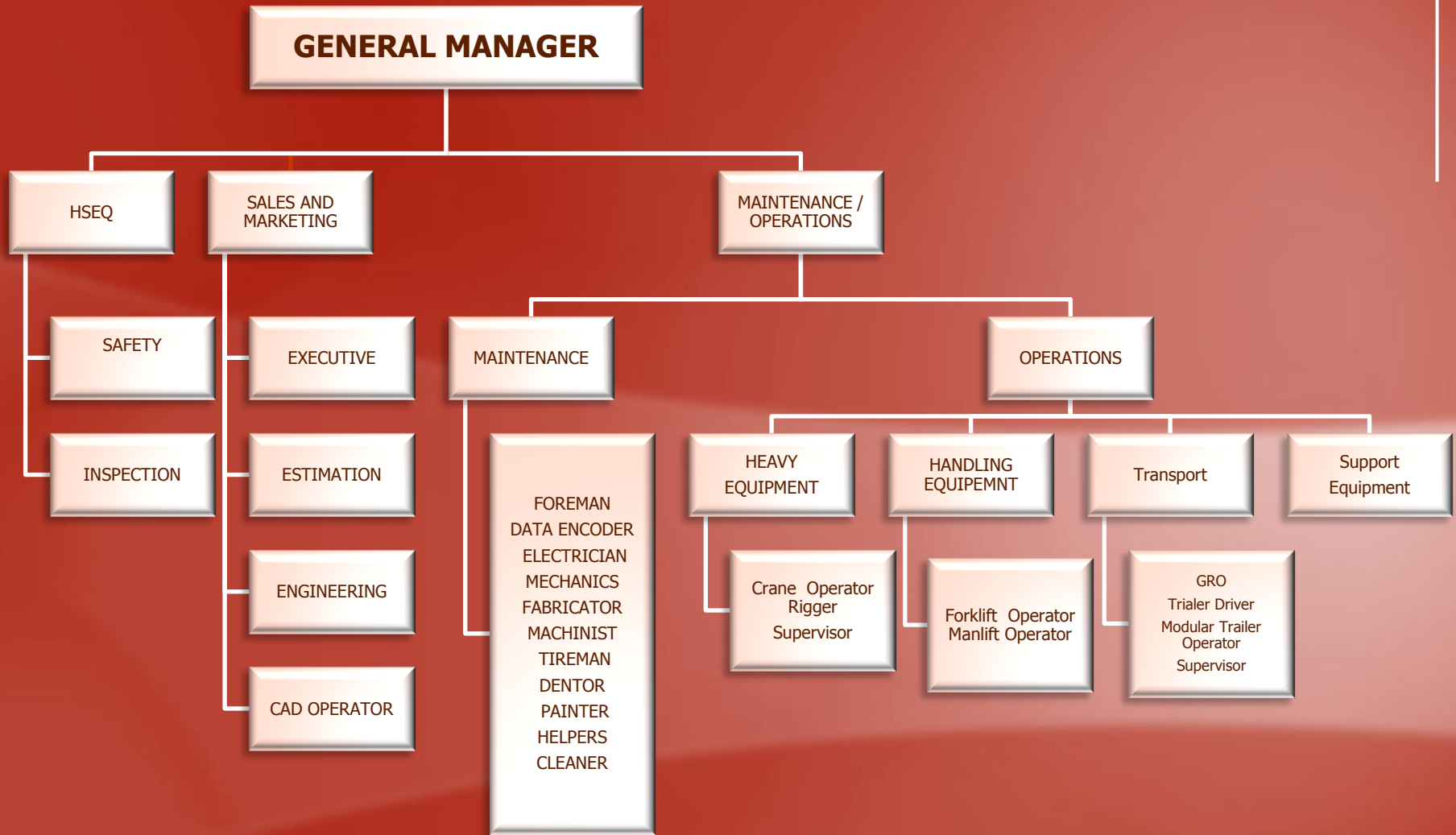
Heavy Equipment	Handling Equipment
Crane Operator 27	Forklift Operator 8
Rigger 4	Manlilft Operator <u>13</u>
Supervisor <u>2</u>	Total 21
Total 33	

SALES & MARKETING:

Sales Executive	2
Marketing Officer	1
Estimator	1
Engineering	1
CAD Operator	1
Document Controller	<u>1</u>
Total	7

Transport	
Gov't Relation Officer	1
Trailer Driver	3
Modular Trailer Driver	1
Supervisor	<u>2</u>
Total	7

Organizational Chart



Core Services

The AIC for Transportation and Heavy Equipment is constantly investing in the latest state of the art heavy construction equipment and transportation to ensure maximum efficiency and safety during the construction activities on site. In addition to our growing numbers of sophisticated equipment, we are fully supported by our partners in providing industrial support services underlining the timely delivery, high quality standard and satisfaction of our clients.

Support Services to any kind of industrial project at site:

- Heavy Equipment e.g. Cranes, Manlift, Forklift, Compressors, Generators, Welding Machines, Trucks & Trailers, etc.
- Heavy Lift
- Heavy Haulage & Delivery to site
- Site Survey and Mapping
- Transport Services
- Specialized Manpower Resources
- Consultancy, Lift Planning and Rigging Study



Heavy Equipment Fleet



Cranes

- 25 to 250 Tons



Manlift

- 8 to 38 Meters



Forklift

- 3 to 15 Tons



Welding Machine

- Diesel or Electric Powered



Generators

- 4.6 to 625 KVA

Tower Light

- Any Capacity



Compressors

- 180 to 700 Cfm



Trucks and Trailers

- Low Bed and Modular



Socket Panel

- Any Capacity



Switch Board

- Any Capacity



Top Clients

- EPC Contractors

- Hyundai Engineering Construction



- Bechtel International Ltd.



- Doosan Heavy Industries



- TAV Construction / ACC



- Drake and Scull International



Top Clients

- Owners

- Al Muhaidib Contracting Company



- El-Seif Engineering Contracting Co. Ltd



- Awjed for Trading



- Saudi Archirodon Ltd.



- Sinopec E & C Middle East



Top Projects

Saudi Aramco-Karan Gas Plant



EPC Contractor: Hyundai Engineering Construction Co. Ltd

Location: Khursaniyah, KSA **Tonnage:** 11,500 **Project Type:** Oil and Gas Refinery

Work Description: Provide Heavy Equipment like Cranes for the Erection of Steel Structure

Top Projects

Maaden-Ras Al Khair Aluminum Smelter Plant



EPC Contractor: Bechtel International Ltd.

Location: Ras Az Zawr, KSA **Tonnage:** 20,000 **Project Type:** Industrial

Work Description: Provide Heavy Equipment Services for the Erection of Steel Structures for Potroom Buildings and other Miscellaneous Structures

Top Projects

SEC-Rabigh Power Plant II (Turbine Buildings)



EPC Contractor: Doosan Heavy Industries

Location: Rabigh, KSA **Tonnage:** 22,300 **Project Type:** Power Plant

Work Description: Provide Heavy Equipment Services for the Erection of Steel Structures for Turbine, Boilers and Common Buildings

Top Projects

Prince Mohammed Abdulaziz International Airport-Madina



EPC Contractor: TAV/ACC

Location: Madina, KSA **Tonnage:** 12,415 **Project Type:** Commercial

Work Description: Provide Heavy Equipment like Cranes for the Erection of Steel Structures.

Top Projects

Saudi Aramco-King Abdullah Petroleum Studies & Research Centre



EPC Contractor: Drake & Scull International

Location: Riyadh, KSA **Tonnage:** 7,500 **Project Type:** Commercial

Work Description: Provide Heavy Equipment like Cranes for the Erection of Steel Structures.

Awards and Certificates



ISO 9001:2008



ISO 14001:2004



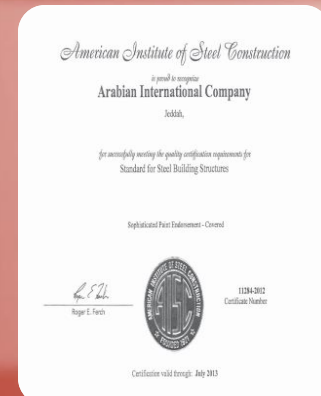
OHSAS 18001:2007



FPC AWS D1.1

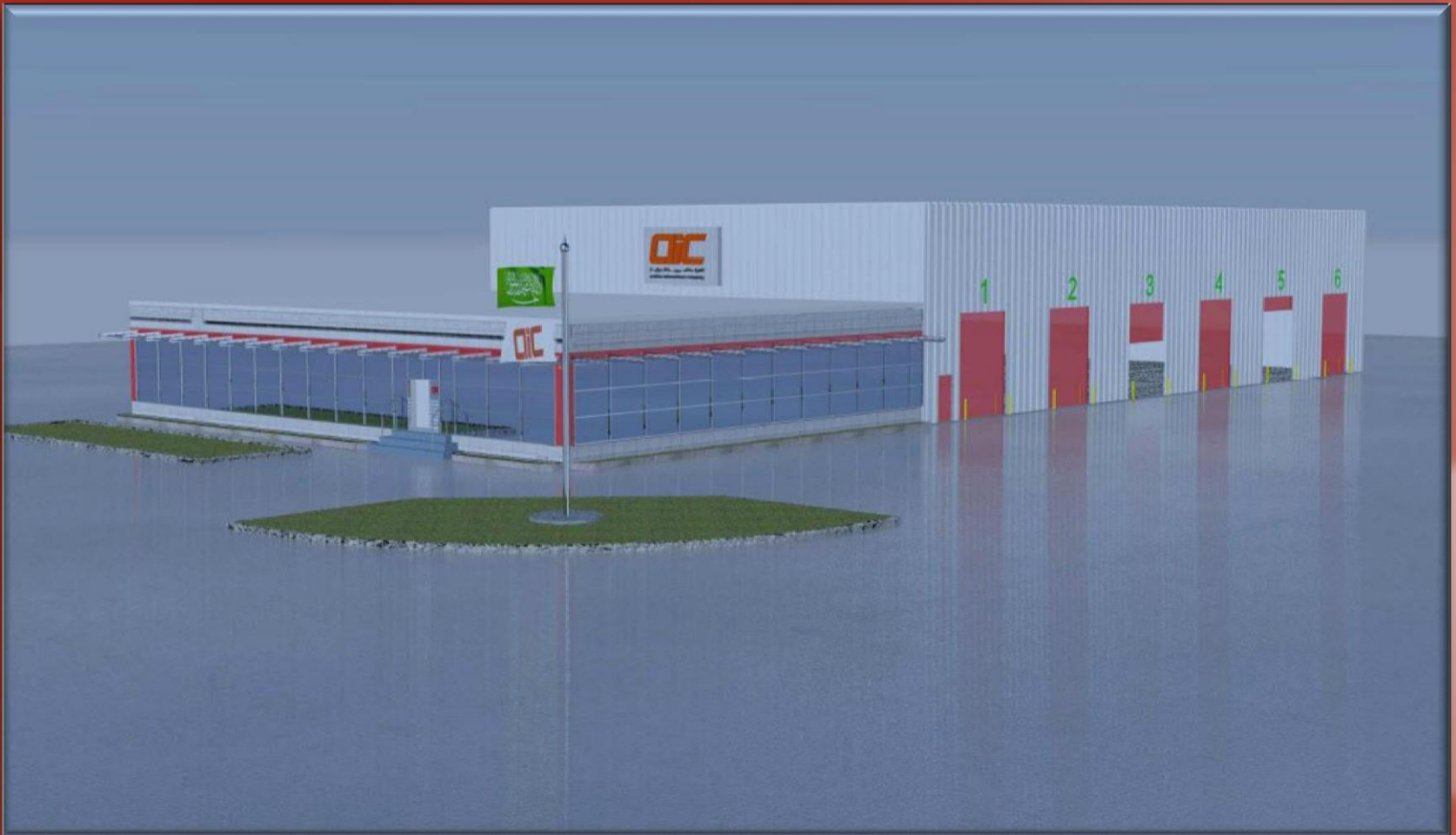


FPC BS 5950



AISC

Future Office Building



Location: Asfan, Makkah Madinah Express Highway

Thank You

“We simply embrace the challenge of growth through innovation and determination”